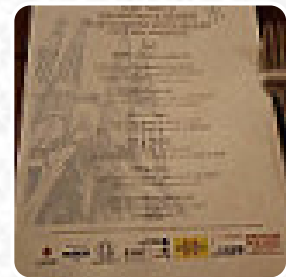
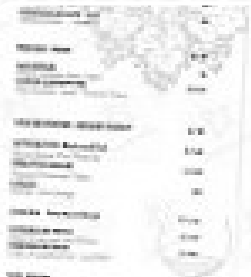


## ***Tinto Menu***

<https://menulist.menu>

555 Burwood Road Hawthorn VIC 3122, Melbourne, Australia  
(+61)399943978 - <https://www.tinto.net.au>



On this website, you can find the *complete menu* of Tinto from Melbourne. Currently, there are 35 courses and drinks available. For changing offers, please contact the owner of the restaurant directly. You can also contact them through their website. What [Enid Wilkinson](#) likes about Tinto:

Amazing food service we loved it. Had a great night and couldn't fault anything everything was delicious. Service was fantastic. We will be coming back in the near future. [read more](#). The diner is accessible and can therefore also be used with a wheelchair or physiological limitations, Depending on the weather, you can also sit outside and be served. What [Nathalie Desjardins](#) doesn't like about Tinto:

Massive kudos for the wine selection here and the staff were lovely. Unfortunately, the tapas and paella are probably of the same quality that you would find at a much better priced and better portioned tapas bar. We loved the ambience but some Spanish music would be much better suited. [read more](#). If you want to **have a drink after work** and sit with friends or alone, Tinto from Melbourne is a good bar, the restaurant serves also **dishes from the European environment**. The restaurant provides a diverse variety of delicious tapas, which are without a doubt worth a sample, this sports bar is a favourite among the guests, who enjoy not only the fantastic food and drinks, but also the opportunity to watch the latest games or races on the big TV.

# *Tinto Menu*



## *Main courses*

CALAMARI

## *Vegetarian*

CAULIFLOWER

## *Snacks*

CROQUETTES

## *Toast*

TOAST

## *Dessert*

CHURROS

## *Tapas Calientes - Warme Tapas*

CHORIZO

## *Starters*

PA AMB TOMAQUET

## *Pasta Zutaten*

MEATBALLS

## *Fischsgerichte*

PAELLA

## *Platos Principales*

PAELLA DE MARISCO

## *Appetisers*

ANCHOVIES

## *Coffee*

COFFEE

## *Condiments and Sauces*

PRAWNS

## *Restaurant Category*

BAR

## *Alcoholic Drinks*

SANGRIA

BEER

## *Tapas*

PATATAS BRAVAS

CROQUETAS DE JAMON

## *These types of dishes are being served*

FISH

LAMB

MUSSELS

COD

## *Dishes are prepared with*



CHICKEN

BRUSSEL SPROUTS

TRAVEL

CHEESE

# *Tinto Menu*



**SALMON**

**CHOCOLATE**

**BLUE CHEESE**

**MEAT**

**CRUDE**

**PORK MEAT**

**SEAFOOD**

**BEEF**

**DUCK**

# Tinto Menu



## Tinto

555 Burwood Road Hawthorn  
VIC 3122, Melbourne, Australia

**Opening Hours:**  
Tuesday 17:00-22:30  
Wednesday 17:00-22:30  
Thursday 17:00-22:30  
Friday 17:00-22:30  
Saturday 17:00-22:30  
Sunday 17:00-22:30

Made with [menulist.menu](https://menulist.menu)

