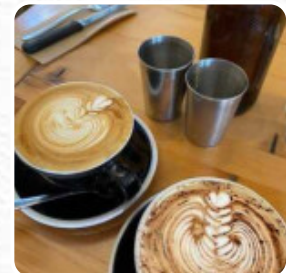
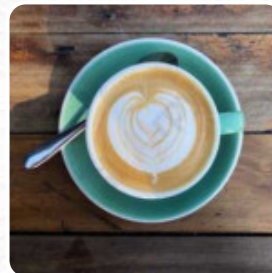
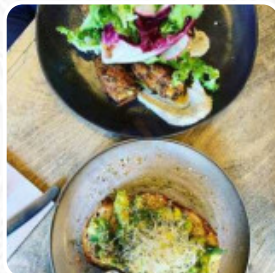




Bayleaf Cafe Menu

<https://menuweb.menu>

1 Marvell Street Byron Bay NSW 2481, BYRON BAY, Australia
+61266858900 - <https://www.bayleafbyronbay.com>



Here you can find the [menu](#) of **Bayleaf Cafe** in BYRON BAY. At the moment, there are **31** menus and drinks on the card. Located in Byron Bay, this café has garnered a reputation for its fabulous food and friendly staff. Despite being busy during the summer holidays, the sweet potato flatcake and coconut cold brew coffee have left diners raving. The okonomiyaki and butterscotch latte have been described as delicious, with the seared tuna and buttermilk chicken receiving high praise as well. The efficient kitchen team and attentive wait staff have contributed to the overall positive experience, although sharing tables with strangers may limit conversations. While some reviewers have noted the lack of menu options and limited kids' meal choices, the quality of the food and service has been consistently highlighted. With recommendations for the Matcha rice porridge, Brekky bowl, and Dukka eggs, this café is a must-visit spot in Byron Bay. Overall, visitors have expressed satisfaction with the fantastic food, friendly service, and dog-friendly atmosphere, though some have mentioned that it may be a bit overhyped and costly. Despite this, the majority of diners have expressed a desire to return, making it a popular choice for a satisfying meal in Byron Bay.

Bayleaf Cafe Menu



Smoothies

SMOOTHIE

Oriental Dishes

FALAFEL

Appetizer

CEVICHE

Soft Drinks

JUICE

Main

PULLED PORK

Kids Meal

KIDS MEAL

Hot Drinks

COFFEE

Coffee

ICED COFFEE

Sides

SWEET POTATO

Restaurant Category

GREEK

Drinks

DRINKS

COLD BREW

Mexican Dishes

BREAKFAST BURRITO

BURRITO

Breakfast

HASH BROWN

SCRAMBLED EGGS

PORRIDGE

These Types Of Dishes Are Being Served

CHICKEN

SALAD

BREAD

TOSTADAS

Ingredients Used



GINGER

CHILI

BACON

PORK MEAT

TUNA

FETA

AVOCADO

EGG

MILK

COCONUT

Bayleaf Cafe Menu



Bayleaf Cafe

1 Marvell Street Byron Bay NSW
2481, BYRON BAY, Australia

Opening Hours:

Monday 07:00-14:00
Tuesday 07:00-14:00
Wednesday 07:00-14:00
Thursday 07:00-14:00
Friday 07:00-14:00
Saturday 07:00-14:00
Sunday 07:00-14:00

Made with menuweb.menu

