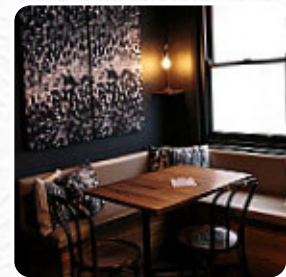
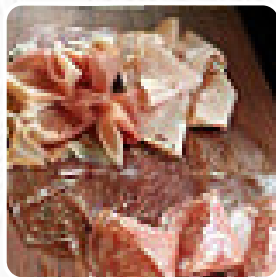




## ***Hampton Wine Co. Menu***

<https://menulist.menu>

444 Hampton Street Hampton VIC 3188, Glen Eira, Australia  
(+61)395988212 - <http://hamptonwine.co>



A comprehensive menu of Hampton Wine Co. from Glen Eira covering all 17 meals and drinks can be found here on the food list. For seasonal or weekly deals, please get in touch via phone or use the contact details provided on the website. What [Francis Konopelski](#) likes about Hampton Wine Co.:

I love this place! Their salmon profiteroles with tomato dust are insanely yummy. I also had the lavender meringue with blueberries and honey, perfect again! My favourite spot for a cocktail or glass of vino. These guys have really set the bar, bravo! [read more](#). As a visitor, you can use the WiFi of the restaurant at no extra cost,

Depending on the weather conditions, you can also sit outside and have something. At Hampton Wine Co. in Glen Eira, [exquisite Australian menus](#) are freshly served for you with a lot of affection and the original ingredients like bush tomatoes and caviar limes, Here, the **meat** is freshly **cooked** on an open flame. Viewing various sports games and matches is also one of the main attractions when visiting this sports bar, You can also unwind at the bar with a freshly tapped beer or other alcoholic and non-alcoholic drinks.

# *Hampton Wine Co. Menu*



## *Alcoholic Drinks*

BEER

## *Starters & Salads*

FRIES

## *Fish*

SMOKED SALMON

## *Dessert*

PROFITEROLES

## *Halloumi*

HALLOUMI

## *Drinks*

DRINKS

## *These types of dishes are being served*

PASTA

COD

## *Restaurant Category*

BAR

COCKTAIL

DESSERT

## *Dishes are prepared with*

CHEESE

DUCK

SALMON

SCALLOP

TOMATE

HONEY

# Hampton Wine Co. Menu



## Hampton Wine Co.

444 Hampton Street Hampton  
VIC 3188, Glen Eira, Australia

**Opening Hours:**  
Monday 16:00-23:00  
Tuesday 16:00-23:00  
Wednesday 16:00-23:00  
Friday 14:00-23:00  
Saturday 14:00-23:00

Made with [menulist.menu](https://menulist.menu)

