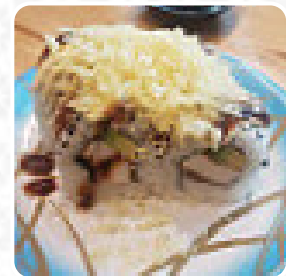
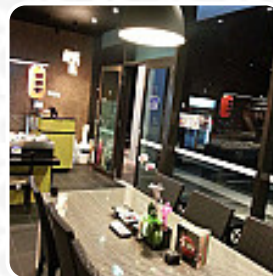
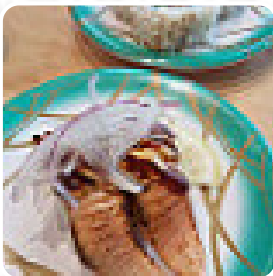




Shinsen Sushi Menu

<https://menulist.menu>

Hamilton Harbour, 8 Harbour Road, Ascot & Hamilton, Brisbane, Australia
(+61)1300386488,(+61)451413384 - <http://www.facebook.com/shinsenhamilton>



On this site, you can find the **complete menu of Shinsen Sushi** from Hamilton. Currently, there are 20 courses and drinks available. For changing offers, please contact the owner of the restaurant directly. You can also contact them through their website. What [Charlene Rosenbaum](#) likes about Shinsen [Sushi](#):

The [sushi](#) were quite fresh and delicious. There was a special of \$3.50 for any plate which made it quite affordable. Close proximity to Portside is a definite plus. [read more](#). The restaurant is accessible and can therefore also be used with a wheelchair or physiological disabilities. What [Hidalgo Alejandro](#) doesn't like about Shinsen [Sushi](#):

Previously, to get away from here a few years ago and enjoyed it a lot. our approach was early rolling and the Japanese chicken curry. we gave it another way tonight, but were disappointed to find that the curry sauce was extremely watery and very tasteless. the early roll were only average. we will not return in a hurry. [read more](#). The Shinsen [Sushi](#) in Hamilton dishes out various fine [seafood](#) courses, and easily digestible Japanese meals are being made with lots of freshly harvested vegetables, fish and meat. Look forward to the enjoyment of [fine vegetarian menus](#), Especially delicious are also the [Sushi](#) and specialties like Inside-Out from this restaurant.

Shinsen Sushi Menu



Appetizers

TAKOYAKI

Pizza

WESTERN

Main courses

SUSHI

Gnocchi

GNOCCHI

Appetizer

TEMPURA

Specialties

TERIYAKI CHICKEN

Sonstiges

SASHIMI

Sashimi Angebot

SALMON SASHIMI

Hauptgerichte - Chicken

FRIED CHICKEN

Side Order

BROWN RICE

Yaki-Grill Menü

PRAWN

Sushi Or Sashimi

OCTOPUS

Condiments and Sauces

PRAWNS

*These types of dishes are
being served*

FISH

Dishes are prepared with

SEAFOOD

EEL

TRAVEL

SALMON

SCALLOPS

VEGETABLE

Shinsen Sushi Menu



Shinsen Sushi

Hamilton Harbour, 8 Harbour
Road, Ascot & Hamilton,
Brisbane, Australia

Opening Hours:

Monday 10:30-20:30
Tuesday 10:30-20:30
Wednesday 10:30-20:30
Thursday 10:30-20:30
Friday 10:30-20:30
Saturday 11:30-15:00

Made with menulist.menu

