

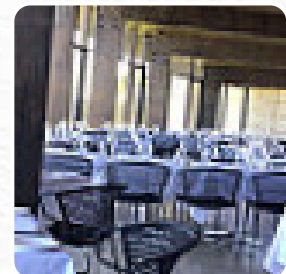
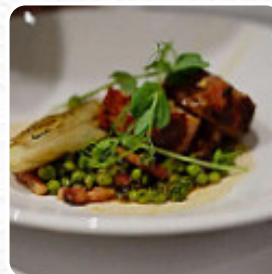


## ***Port Phillip Estate Menu***

<https://menulist.menu>

263 Red Hill Road, Red Hill South, Red Hill, Mornington Peninsula, VIC, Main Ridge, Australia

(+61)359894444 - <http://www.portphillipestate.com.au>



The restaurant from Main Ridge offers 31 different **meals and drinks on [the card](#)** at an average A\$13. What [Nick Schamberger](#) likes about Port Phillip Estate:

Port Phillip Estate really set the bar high for everyone else to try and meet. The staff were excellent, they responded to all of my requests (it was my partners birthday) they helped to make it a very enjoyable night. The food and wine was incredible, highly recommend. [read more](#). In pleasant weather you can even eat in the outdoor area. What [Simeon Hilpert](#) doesn't like about Port Phillip Estate:

in the rule they visit this restaurant twice in year, but never again. starter had no interest. the main kingfish was over boiled and only lukewarm was probably too long sitting on the side. vegetarian chief was boring. Cheese plate was okay. the norms have fallen considerably. overpriced for what we have, what such a scandal in the face of the beautiful location and great wein. in the environment there are much bett... [read more](#). At Port Phillip Estate in Main Ridge, tasty Australian menus are freshly cooked for you with a lot of devotion and the typical products like bush tomatoes and caviar limes, At the bar, you can relax with a **freshly tapped beer** or other alcoholic and non-alcoholic drinks. Not to be overlooked is also the large variety of coffee and tea specialties in this locale.

# Port Phillip Estate Menu



## Non alcoholic drinks

WATER

## Pizza

WESTERN

## Main courses

CRAB

## Vegetarian

CAULIFLOWER

## Side dishes

MIXED LEAVES

A\$12

## Sweets

CHEESE CAKE

## For the Table

HAWKE'S POTATOES, CONFIT  
GARLIC, PERSILLADE

A\$15

## Cheeses

A SELECTION OF CHEESE

## Restaurant Category

DESSERT

## Dessert

DARK CHOCOLATE 'CHEESE CAKE',  
CASHEW, BERRIES (GF, VG)

YOGURT PANNA COTTA, APPLE,  
ALMOND CINNAMON CAKE (GF)

PEACH, PINK PEPPERCORN, MERINGUE,  
RASPBERRY (GF)

## Cheese

MOUNTAIN MAN WASHED RIND, JERSEY  
COW MILK, VICTORIA

ONETIK OSSAU-IRATY, SHEEP MILK,  
PYRENEES FRANCE

CILIA, GOAT MILK, MAIN RIDGE,  
VICTORIA

## Main Course

CHARRED HIRAMASA KINGFISH,  
DROMANA BAY PICKLED MUSSELS,  
ZUCCHINI, BASIL (GF)

CENTRAL VICTORIAN DUCK BREAST,  
CHARRED BLOOD PLUM, SALT-BAKED  
BEETROOT

CAVATELLI, ESTATE GROWN PUMPKIN,  
MISO, BEURRE NOISETTE SABAYON,  
SEEDS, NUTS (V)

ROAST DRY-AGED PORK LOIN,  
ROASTED PEPPERS, ROMESCO, HERB  
DRESSING (GF)

## Entree

SMOKED HAM HOCK, GRAIN MUSTARD,  
SAUERKRAUT

GNOCCHI, MUSHROOM A LA GRECQUE,  
MUSHROOM CONSOMMÉ

WOOD ROASTED CALAMARI, PICKLED  
LEGS, ESTATE GROWN TOMATOES,  
SOURDOUGH

SEARED ŌRA SALMON, KOHLRABI,  
SOFT HERB EMULSION (GF)

## Dishes are prepared with

ACEITUNAS

OLIVEN

# Port Phillip Estate Menu

CHEESE

CHOCOLATE

*These types of dishes are*

*being served*



DESSERTS

PASTA

FISH

STEAK



# ***Port Phillip Estate Menu***



## ***Port Phillip Estate***

263 Red Hill Road, Red Hill  
South, Red Hill, Mornington  
Peninsula, VIC, Main Ridge,  
Australia

**Opening Hours:**  
Monday 11-17:00  
Tuesday 11-17:00  
Wednesday 11-17:00  
Friday 11-22:30

Made with [menulist.menu](https://menulist.menu)

