

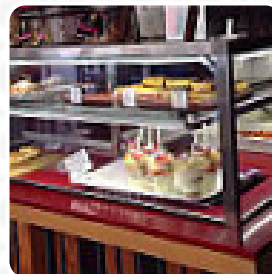


Livelo Espresso and Cafe Menu

<https://menulist.menu>

263 Clarence Street, CBD, Sydney, Australia

(+61)290902120, (+61)292675875 - <http://www.facebook.com/liveloesspressoandkitchen>



On this website, you can find the **complete [menu](#) of Livelo Espresso and Cafe** from Sydney. Currently, there are **25** dishes and drinks up for grabs. For **seasonal or weekly deals**, please contact the owner of the restaurant directly. You can also contact them through their website. What [Kavon Dare](#) likes about Livelo Espresso and Cafe:

Run by Koreans serving modern Aussie food. Not bad the food has taste. The meal is sizeable for good price and can be shared between two small eaters. I like mostly the passion and proactive attitude of the staff. [read more](#). When the weather conditions is pleasant you can also be served outside. What [Reese Kozey](#) doesn't like about Livelo Espresso and Cafe:

livelo have a diverse and strong selection of healthy meals. they also have quite good coffee (I had cappuccinos and mochas here.) overall they offer a good experience. [read more](#). Livelo Espresso and Cafe from Sydney is a comfortable café, where you can have a small snack or cake with a warm coffee or a hot chocolate, here they serve a diverse brunch for breakfast. Of course, the right drink with a meal can be crucial; this gastropub provides a wide selection of delicious and regional alcoholic beverages like beer or wine, Naturally, you should also taste the *delicious burgers*, accompanied by sides like fries, salads, or wedges offered.

Livelo Espresso and Cafe Menu



Salads

SALAD

Süße Desserts

BROWNIE

Eggs & Pancakes

OMELETTE

Starters & Salads

POTATOE CHIPS

Breakfast

PORRIDGE

For the small hunger

EGG ROLL

Soft drinks

JUICE

Sauces

SAUCE

Restaurant Category

BAR

Pizza

PIZZA GRANDE

FUSION

Coffee



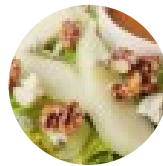
FLAT WHITE COFFEE

ESPRESSO

LONG BLACK

COFFEE

These types of dishes are being served



SALAD

TORTILLA

BURGER

WRAP

Dishes are prepared with

ANANAS CHICKEN

EGG

BACON

CHEESE

TOMATE

SPINAT

Livelo Espresso and Cafe Menu



Livelo Espresso and Cafe

263 Clarence Street, CBD,
Sydney, Australia

Opening Hours:
Monday 6:30-15:30
Tuesday 6:30-15:30
Wednesday 6:30-15:30
Thursday 6:30-15:30

Made with menulist.menu

