

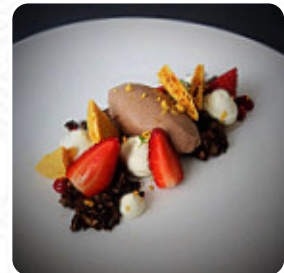


## Measure Menu

<https://menuweb.menu>

642 Beaufort Street, Mount Lawley, Perth, WA, Australia

+61457552245 - <https://www.measurebar.com.au>



A complete [menu](#) of Measure from Mount Lawley covering all 22 meals and drinks can be found here on the menu. Measure, a new dessert bar in Perth, has received mixed reviews. While some diners found the desserts to be well presented and enjoyable, others were disappointed by the lackluster flavors. The service, however, received high praise for its professionalism and attentiveness. The extensive cocktail list was hit or miss, with some unique creations that didn't quite hit the mark for some customers. Prices were on the higher side, with one couple spending \$160+ for their meal. Despite the varying opinions, many diners expressed a desire to return to Measure, citing the great coffee, beautiful desserts, and friendly staff as reasons to revisit. Overall, Measure seems to offer a pleasant dining experience with room for improvement in some areas of the menu.

# Measure Menu



## Desserts

CHOCOLATE CAKE

## Pizza

LARGE PIZZA

## Cocktails

NEGRONI

## These Types Of Dishes Are Being Served

DESSERTS

SALAD

## Hot Drinks

COFFEE

TEA

MILK TEA

## Restaurant Category

BAR

VEGAN

DESSERT

## Dessert

CREME BRULEE

CHEESECAKE

RICE PUDDING

CREPES

## Ingredients Used

FRUIT

MANGO

CARAMEL

PASSION FRUIT

CHORIZO

MILK

CHOCOLATE

---

# Measure

642 Beaufort Street, Mount  
Lawley, Perth, WA, Australia

**Opening Hours:**  
Monday 11:00 - 22:00  
Tuesday 11:00 - 22:00  
Wednesday 11:00 - 22:00  
Thursday 11:00 - 22:00  
Friday 11:00 - 23:00  
Saturday 11:00 - 23:00  
Sunday 11:00 - 22:00

Made with [menuweb.menu](https://menuweb.menu)

