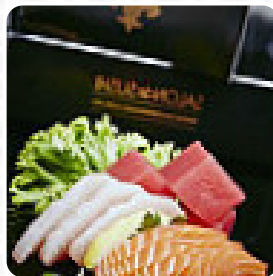




Salon de Sushi Menu

<https://menulist.menu>

293 Clarendon Street, South, Melbourne 3205., South Melbourne, Australia
(+61)399393723 - <http://www.salondesushi.com.au>



The Card of Salon de Sushi from South Melbourne includes about 155 different dishes and drinks. On average, you pay for a dish / drink about A\$10. What [Kennedy Anderson](#) likes about Salon de [Sushi](#): my friend and I ate in the salon de [sushi](#) as it is a short walk away from her office. there were prefabricated foods like [sushi](#) in cooler for those who like to grab and go. we order poke, where we get the carbs or. have only chosen greens, toppings and sauce. it was a beautiful day so we decided to sit outside. there are tables and chairs in the interior. eating was fresh and good. I'd eat there again if I'm in the o... [read more](#). In nice weather you can even eat in the outdoor area, And into the accessible spaces also come clientele with wheelchairs or physiological disabilities. What [Estelle Bergstrom](#) doesn't like about Salon de [Sushi](#): Staff were excellent and environment is nice. When in Melbourne we normally enjoy some fresh Japanese at Purple Peanuts in the CBD but went to salon de [sushi](#) based on the reviews. While the meat curry was good, and the seared scallop nagiri was very...tasty, we felt the seared salmon belly and beef nagiri wasn't up to par and the other dishes including miso soup and poke chirashi bowl were good but not excellent. We pr... [read more](#). With fresh ingredients like fish, vegetables and meat, Salon de [Sushi](#) from South Melbourne prepares for you **delicious [sushi](#) (e.g., Nigiri and Inside-Out)** and numerous additional variations, Furthermore, the visitors love the inventive combination of different menus with new and partially experimental ingredients - a good example of successful Asian Fusion. Salon de [Sushi](#) focuses on a lot of fresh vegetables, fish and meat in its *healthy Japanese cuisine*, The customers of the establishment are also thrilled with the large variety of various coffee and tea specialities that the restaurant offers.

Salon de Sushi Menu



Salads

SEAWEED SALAD

Alcoholic Drinks

RIESLING

Appetizers

HOMEMADE SEAWEED SALAD

Sashimi

SASHIMI SALMON

Nigiri

SALMON NIGIRI

Pizza

PIZZA SPECIAL

Mains

TERIYAKI SALMON DON

Donburi

TEMPURA CHICKEN DON

Extras

SOY SAUCE

Drinks

JAPANESE UNSWEETENED GREEN TEA

Specialties

TERIYAKI CHICKEN

Dessert

SAKURA MOCHI

Beilagen und Extras

SOJASAUCE

Soft drinks

STRANGELOVE ORGANIC GINGER BEER

Special Rolls

SEARED SALMON

Don Buri

CHICKEN KATSU DON

snack

POCKY

Cold drinks

RAW C COCONUT WATER

Sonstiges

SASHIMI

Japanese specialties

MISO SOUP

Onigiri

ONIGIRI TUNA MAYO

Sashimi & Don

TERIYAKI CHICKEN DON

Energydrinks

WHITE

Beverages

RAMUNÉ ORIGINAL

Sashimi & Sushi

SASHIMI SPECIAL

Coffee

COFFEE

Sushi and Sashimi Entree

SALMON COMPLETE

Cold Selection

MIXED SUSHI PLATTER

Condiments and Sauces

CURRY

Sauces

SAUCE

Breakfast - Shmeear Flavors

REGULAR

Vegetable Or Hand Roll

ASPARAGUS

Rice | Soup | Side

PORK KATSU DON

Main courses

TOPPINGS

SUSHI

A\$6

A\$19

A\$14

A\$15

A\$5

A\$5

A\$6

A\$15

A\$3

Salon de Sushi Menu



Restaurant Category

VEGETARIAN

VEGAN

These types of dishes are being served

SALAD

SOUP

Dishes are prepared with



KIMCHI

MISO

SCALLOP

WHITE RICE

AVOCADO

TERIYAKI

BEEF

MEAT

TRAVEL

CHICKEN

Uncategorized

VEGETARIAN PETIT BOX

MIX PETIT BOX

ROYAL PETIT BOX

CUBIC CHICKEN

SALMON AND VEGETABLE JAPANESE CURRY

CHICKPEA GF, 15, DF

CARROT SALAD GF, 15, DF

VEGETABLES STICK GF, 15

MISO SOUP GF, DF

PEPPA MAME

SUSHIYA'S OMELETTE

TIRAMISU MOCHI 15

GREENTEA MOCHI 15

MELON MOCHI 15

GINGER MINI CUP 15, GF, DF

SESAME DIP MINI CUP 15, GF

WASABI MAYO MINI CUP 15, GF

WASABI MINI CUP 15, GF, DF

MAYO MINI CUP 15, GF

SOY SAUCE SALE 15, DF

SOY SAUCE SUCRE 15, DF

PREMIUM GF SOY SAUCE 15, GF, DF

WASABI - 50G 15, GF, DF

GINGER - 100G 15, GF, DF

MAYO - 100G 15, GF

SESAME DIP - 100G 15, GF

WASABI MAYO - 100G 15, GF

HEPBURN SPARKLING NATURAL MINERAL WATER (275ML)

BOXED WATER (500ML)

NOAH'S VALENCIA ORANGE JUICE (260ML)

A\$9

NOAH'S FRESH CRUSHED APPLE (260ML)

HEPBURN SPARKLING NATURAL MINERAL WATER (500ML)

OI OCHA GREEN TEA (500ML)

STRANGELOVE ORGANIC SMOKED COLA

STRANGELOVE ORGANIC BLOOD ORANGE AND CHILLI

STRANGELOVE ORGANIC BITTER GRAPEFRUIT

TEMPURA VEGE DON

KAISEN SEAFOOD DON

ONIGIRI TERIYAKI CHICKEN

A\$3

ONIGIRI TEMPURA PRAWN

ONIGIRI UME BASIL (V, VG)

ONIGIRI SHIBAZUKE (V, VG)

POKE CHIRASHI BOWL

SDS SUPER TASTY CURRY UDON NOODLE SOUP

TERIYAKI SALMON DON

TERIYAKI CHICKEN DON

SOBA (NF, DF)

VEG SOBA (V, VG, NF, DF)

UDON (NF, DF)

VEG UDON (V, VG, NF, DF)

MISO SOUP (GF, V, VG, NF, DF)

A\$9

MULTI GRAIN STEAM RICE (GF, V, VG, NF, DF)

A\$11

SALMON & VEGETABLE JAPANESE CURRY

A\$11

BEEF & VEGETABLE CURRY

A\$15

SALMON MAKUNOUCHI BENTO

A\$14

CHICKEN KASHIWA BENTO

A\$5

JAPANESE CROQUETTE BENTO BOX

A\$5

CUBIC CHICKEN SUSHI (NF, DF)

A\$6

CUBIC SALMON SUSHI (NF, DF)

A\$3

PETIT CLASSIC

A\$5

SALON DE COMPLETE

A\$6

SALMON NIGIRI COMPLETE (GF, NF, DF)

A\$5

ROLL COMPLETE

A\$5

VEGE COMPLETE

A\$5

CARROT SALAD (GF, V, VG, NF, DF)

A\$0

CHICKPEA (GF, V, VG, NF, DF)

A\$0

VEGE STICK (GF, V, VG, NF, DF)

A\$0

HOMEMADE SEAWEED SALAD (V, VG, NF, DF)

A\$0

SUSHIYA'S OMELETTE (V, NF)

A\$0

EDAMAME (GF, V, VG, NF, DF)

A\$1

PEPPA MAME (GF, V, VG, NF, DF)

A\$1

BEEF TATAKI (NF, DF)

A\$1

TIRAMISU MOCHI (GF, V, NF)

A\$5

GREENTEA MOCHI (GF, V, NF)

A\$5

SAKURA MOCHI (GF, V, NF)

A\$5

MELON MOCHI (GF, V, NF)

A\$5

SOY SAUCE SALE

A\$5

SOY SAUCE SUCRE

A\$4

PREMIUM GF SOY SAUCE

A\$4

WASABI MINI CUP (GF, V, DF)

A\$5

WASABI 50G (GF, V, DF)

Salon de Sushi Menu



GINGER MINI CUP (GF, V, DF)

GINGER 100G (GF, V, DF)

MAYO MINI CUP

MAYO 100G

SESAME DIP MINI CUP

SESAME DIP 100G

WASABI MAYO MINI CUP

WASABI MAYO 100G

STRANGELOVE ORGANIC LEMON SQUASH

STRANGELOVEORGANIC SMOKED COLA

STRANGELOVE ORGANIC ORGANIC BITTER GRAPEFRUIT

STRANGELOVE ORGANIC BLOODORANGEANDCHILLI

NOAH'S VALENCIA ORANGE JUICE

A\$0

A\$5

A\$0

A\$5

A\$0

A\$5

A\$0

A\$5

A\$6

A\$6

A\$6

A\$6

A\$5

NOAH'S FRESH CRUSHED APPLE

NOAH'SAPPLECOCONUTWATERBANANACHIAVANILLA
SMOOTHIE

GREEN TEA (TEA BAG)

GENMAI TEA (TEA BAG)

COKE GLASS BOTTLE 385ML

NU SPRING WATER 250ML

NAKD ARTESIAN SPARKLING WATER 300ML

NAKD ARTESIAN SPARKLING WATER 750ML

ADDWATER STILL WATER 500ML

BOTTLED BEERS & CIDERS

BOTTLES OF WINE/SAKE

Salon de Sushi Menu



Salon de Sushi

293 Clarendon Street, South,
Melbourne 3205., South
Melbourne, Australia

Opening Hours:

Monday 11:30-20:30
Tuesday 11:30-20:30
Wednesday 11:30-20:30
Thursday 11:30-20:30
Friday 11:30-20:30
Saturday 12:00-20:30

Made with [menulist.menu](#)

