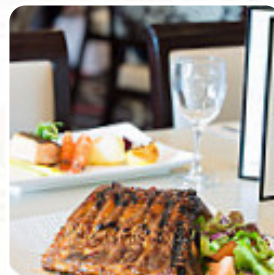




Oatley RSL Menu

<https://menulist.menu>

23 Letitia St, Oatley, Hurstville, New South Wales 2223, Australia
(+61)295802002 - <http://www.clubboatley.com.au/dining/the-oat-mill>



A complete [menu](#) of Oatley RSL from Oatley covering all 36 courses and drinks can be found here on the food list. For seasonal or weekly deals, please get in touch via phone or use the contact details provided on the website. What [User](#) likes about Oatley RSL:

We dined here on a Saturday night with a large group of 29 people. The food was really delicious and very generous portions. No-one in the group had a bad meal and we will all certainly eat here again. [read more](#). What [User](#) doesn't like about Oatley RSL:

Coles cafeteria in a registered club. Went there with group of nine of us ranging in age from early 20s to 70s for a family celebration. Sat in what is effectively an auditorium but deemed a dining area listing to PA announcement about raffles whilst eating cafeteria food club food from the seventies. The food was limited in range, basic however not overpriced. Nothing redeeming about the experience. Nine of us rated... [read more](#). The rooms on site are wheelchair accessible and can also be used with a wheelchair or physical disabilities, and there is free WiFi. If the weather are right, you can also eat and drink outside. At Oatley RSL in Oatley, exquisite Australian menus are freshly cooked for you with a lot of affection and the authentic ingredients such as **bush tomatoes and caviar limes**. Also, there are fresh and snacks available, complemented by an array of cold and hot beverages. If you'd like something sweet to finish off, Oatley RSL does not disappoint with its extensive **selection of desserts**. This *sports bar* is a popular hangout for guests who enjoy watching the latest games or races on the big screen while enjoying food and drinks.

Oatley RSL Menu



Appetizers

NUGGETS

Pizza

WESTERN

Mains

FILLET

Extras

SWEET POTATO

Snacks

CHIPS

Fish dishes

FISH AND CHIPS

Salad

GREEN SALAD

Starters

SALADE VERTE

Lamm & hähnchen

MUSHROOM

Ice cream*

VANILLA

Noodle

CRAB

Aperitif

GLASS OF CHAMPAGNE

Yaki-grill menü

PRAWN

Sushi & sashimi a la carte

SCALLOP

Breakfast - shmeear flavors

REGULAR

Main course

CEVICHE

PORK BELLY

Restaurant category



DESSERT

ITALIAN

BAR

Dishes are also prepared with these ingredients



BUTTER

POTATOES

CHICKEN

MUSHROOMS

PORK

CHAMPIGNONS

VEGETABLES

Oatley RSL Menu

***These types of dishes are
being served***

DESSERTS

OYSTERS

FISH

STEAK

BREAD

SALAD

ICE CREAM



Oatley RSL Menu



Oatley RSL

23 Letitia St, Oatley, Hurstville,
New South Wales 2223, Australia

Opening Hours:

Monday 17:30-21:00
Tuesday 12:00-21:00
Wednesday 12:00-21:00
Thursday 12:00-21:00
Friday 12:00-21:00
Saturday 12:00-21:00
Sunday 12:00-21:00

Made with menulist.menu

