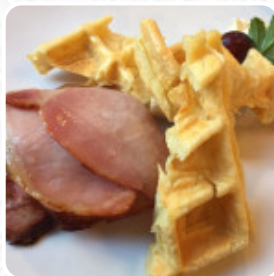




QR-Code zur Speisekarte von Leuven Belgian Beer Cafe

Leuven Belgian Beer Cafe Menu

<https://menulist.menu>
135-137 Featherston St, Wellington New Zealand, New Zealand
<https://www.leuven.co.nz>



gallery-image

Here you can find the [menu](#) of **Leuven Belgian Beer Cafe** in Wellington New Zealand. At the moment, there are **4** courses and drinks on the menu. You can inquire about *changing offers* via phone. What [User](#) likes about Leuven Belgian Beer Cafe:

This restaurant is great for hang out, the beer also amazing. I came for dinner this time. The food was great and the staff was really polite. Sadly, my personal favorite dish was gone, the spicy mussle. I always order the spicy mussle. Also, the waffle ice cream I order, usually comes with fruits but this time they change with whip cream which i dont like it but over all, the waffle ice cream still taste good. I hop... [read more](#). What [User](#) doesn't like about Leuven Belgian Beer Cafe:

Sadly there was a clear language barrier with the wait staff. Our order wasn't correct. We ordered 1 mussels 1 chips and 2 beers. We got 2 mussle pots 2 different flavours and brought it up with staff. Mussle pot had 15 tiny mussels. Wait staff need training. [read more](#). When the weather conditions is good you can also eat and drink outside. Leuven Belgian Beer Cafe from Wellington New Zealand is a cozy coffee house, where you can enjoy a snack or cake with a warm coffee or a sweet chocolate.

Leuven Belgian Beer Cafe Menu



Alcoholic drinks

BEER

Sauces

GUACAMOLE

Breakfast

PORRIDGE

Lamm & hähnchen

MUSHROOM

Tapas

EGGPLANT

Main

GRANOLA

French fries

FRENCH FRIES

Pasta Zutaten

MEATBALLS

Meals - Angebote

FAMILY MEAL

Dinner entrées

LAMB SHANK

Plates brunch

WAFFLE

From the jasper charcoal oven

RUMP

Restaurant category

VEGETARIAN

These types of dishes are being served

TOSTADAS

STEAK

ICE CREAM

LAMB

SALAD

Dishes are also prepared with these ingredients

CHAMPIGNONS

EGGS

BACON

EGG

DUCK

CHICKEN

BEANS

Leuven Belgian Beer Cafe Menu



Leuven Belgian Beer Cafe

135-137 Featherston St,
Wellington New Zealand, New
Zealand

Opening Hours:
Sunday 11:30-22:00
Monday 11:30-22:00
Tuesday 11:30-22:00
Wednesday 11:30-22:00
Thursday 11:30-22:00
Friday 11:30-22:00
Saturday 11:30-22:00

Made with menulist.menu

 gallery image

