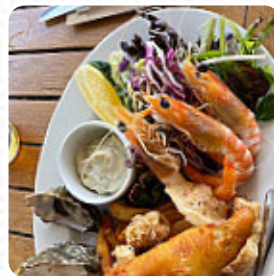




The Lighthouse Wharf Hotel Menu

<https://menulist.menu>

1 Commercial Road, Port Adelaide, SA, PORT ADELAIDE, Australia
(+61)884471580 - <https://www.thelighthousewharfhotel.com.au>



A complete menu of The Lighthouse Wharf Hotel from PORT ADELAIDE covering all **69** meals and drinks can be found here on the food list. For changing offers, please get in touch via phone or use the contact details provided on the website. What [Elyse Roberts](#) likes about The Lighthouse Wharf Hotel:

they would give us a visit from 6 if I could. eating was good, hot and delicious. perfectly cooked fish and chips for one and tinted fish and chips for the other. crispy salate for both. we said we would share so that the employee said. we should have additional tellers to make this easy. they seemed fast and two pairs of tangs to help our serve. all done with smiles. the staff was busy when the place was filled. we... [read more](#). What [Roy Bernier](#) doesn't like about The Lighthouse Wharf Hotel:

My husband and I have previously had an early dinner and bottle of wine here on a Sunday afternoon and really enjoyed it, however this time we were very disappointed! We both ordered the wharf burger at \$20 each, and were served a very soggy bun, with little salad, egg and bacon. A few nice chips in a basket, but the burger was not at all tasty and the almost non existent Bun on the bottom meant that it was impossibl... [read more](#). The restaurant also offers the possibility to sit outside and eat in beautiful weather, And into the accessible rooms also come guests with wheelchairs or physical limitations. If eating and drinking is too unexciting for you, go to this **sports bar** for a variety of large and small snacks and menus and catch live football, tennis or Formula 1 games, and you can look forward to the fine typical [seafood](#) cuisine. If you want to have breakfast, a [tasty brunch](#) awaits you, The visitors of the restaurant also appreciate the extensive selection of various *coffee and tea specialities* that the restaurant has to offer.

The Lighthouse Wharf Hotel Menu



Non alcoholic drinks

WATER

Appetizers

GARLIC BREAD

Pizza

MISTA

Vegetarian

CAULIFLOWER

Side dishes

ONION RINGS

Toast

TOAST

Fish dishes

FISH AND CHIPS

*Schnitzel**

SCHNITZEL

Breakfast

HASH BROWN

Chicken dishes

CHICKEN PARMIGIANA

Little things

ARANCINI

Starters

SEAFOOD PLATTER

Sushi menus

STARTER

Lamm & hähnchen

MUSHROOM

Soft drinks

WATER

Mexican dishes

TACOS

*Al forno**

PARMIGIANA

Sauces

MUSHROOMS

Saucen, chutneys & extras

GRAVY

Mexican specialities

RIBS

Sonstiges

CHICKEN SCHNITZEL

Pizza bread

KNOBLAUCHBROT

The Lighthouse Wharf Hotel Menu



Kids meal

KIDS MEAL

Sushi - inside-out-maki

SOFT SHELL CRAB

Herzhafte snacks und wraps

BAKED BEANS

Hot drinks

TEA

Meats

PORK RIBS

Italian specialties

RISOTTO

Coffee

COFFEE

From the jasper charcoal oven

RUMP

Alcoholic drinks

BEER

GUINNESS

Snacks

CHIPS

NACHOS

Seafood

SALT AND PEPPER SQUID

PRAWNS

Drinks

GLASS OF WINE

DRINKS

Main course

BBQ PORK

CEVICHE

Fingerfood

CALAMARES

ZWIEBELRINGE

CHICKEN WINGS

Restaurant category

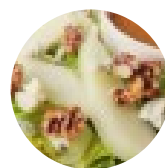
GREEK

BBQ

VEGAN

VEGETARIAN

These types of dishes are being served



SALAD

BURGER

TOSTADAS

DESSERTS

PASTA

STEAK

BREAD

The Lighthouse Wharf Hotel Menu



FISH

OYSTERS

Dishes are also prepared with these ingredients



SAUSAGE

BEANS

MILK

EGGS

ONION

TOFU

GARLIC

PORK

CHICKEN

SEAFOOD

CHOCOLATE

CHAMPIGNONS

BACON

The Lighthouse Wharf Hotel Menu



The Lighthouse Wharf Hotel

1 Commercial Road, Port
Adelaide, SA, PORT ADELAIDE,
Australia

Opening Hours:
Thursday 10:30 -22:00
Friday 10:30 -22:00
Saturday 10:30 -22:00
Sunday 10:30 -22:00
Monday 10:30 -22:00
Tuesday 10:30 -22:00
Wednesday 10:30 -22:00

Made with menulist.menu

