

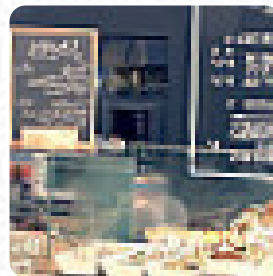
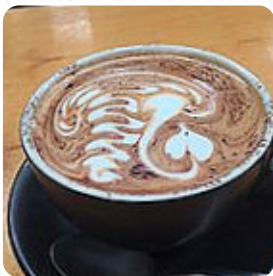


The Factory by the Black Olive Gourmet Food Menu

<https://menulist.menu>

29 Marshall Rd, Kirrawee, New South Wales 2232, Australia

(+61)295450566 - <http://www.facebook.com/thefactorybyblackolive/>



A complete menu of The Factory by the Black Olive Gourmet Food from Kirrawee covering all 43 dishes and drinks can be found here on the menu. For changing offers, please get in touch via phone or use the contact details provided on the website. What [User](#) likes about The Factory by the Black Olive Gourmet Food:

Tucked away within the factory area of Kirrawee is this great little cafe/deli. We often go there for breakfast and it never fails to deliver a delicious meal. They recently started a happy hour each afternoon so we are looking forward to making a stop there for that. [read more](#). What [User](#) doesn't like about The Factory by the Black Olive Gourmet Food:

Went in for lunch today, asked for a falafel roll, paid \$14, waited for 15mins and was handed a bag and serviette, walked outside and opened the bag and saw it was a sandwich, thought they might have had no buns left, no...problem, took a bite, as I chewed on it the beef was getting stuck in my teeth, went back and asked "What have you given me?" "Beef Brisket" I was told, "What did you order?" "Falafel Roll"... [read more](#). The restaurant and its rooms are wheelchair accessible and thus reachable with a wheelchair or physiological limitations, Depending on the weather conditions, you can also sit outside and have something. WLAN is available without additional charges. The Factory by the Black Olive Gourmet Food from Kirrawee is a *relaxed coffee house*, where you can enjoy a snack or cake with a **warm coffee or a hot chocolate**, The tasty **sandwiches**, healthy salads and other snacks are also suitable for a snack. Following various sports events and competitions is also one of the pluses of visiting this sports bar, and the guests of the establishment are thrilled with the Greek specialties.

The Factory by the Black Olive Gourmet Food



Desserts

DONUT

Süßes

MUFFINS

Toast

TOAST

Drinks

BOTTLE OF WATER

Sauces

BBQ SAUCE

Vegetarian dishes

SPINACH TART

Mexican dishes

CHILLI

*Al forno**

LASAGNE

Main

PULLED PORK

Muffins

RASPBERRY

Energydrinks

WHITE

Popular items

SPANAKOPITA

Condiments

SYRUP

Breakfast - shmeear flavors

REGULAR

Italian ice flavors

PASSION FRUIT

Non alcoholic drinks

CHAI

WATER

Soft drinks

WATER

JUICE

Pizza

ROYAL

MIX

MEDIUM

Coffee

ICED LATTE

COFFEE

CHAI LATTE

Restaurant category

BBQ

The Factory by the Black Olive Gourmet Food



BAR

DESSERT

These types of dishes are being served

BURGER

SALAD

BREAD

TOSTADAS

Dishes are also prepared with

these ingredients



PORK

MEAT

BUTTER

EGG

BACON

CHOCOLATE

BEEF

SPINAT

CHEESE

FRUIT

EGGS

The Factory by the Black Olive Gourmet Food



The Factory by the Black Olive Gourmet Food

29 Marshall Rd, Kirrawee, New
South Wales 2232, Australia

Opening Hours:

Sunday 7:00-14:00
Monday 6:00-16:00
Tuesday 6:00-16:00
Wednesday 6:00-16:00
Thursday 6:00-16:00
Friday 6:00-16:00
Saturday 7:00-15:00

Made with menulist.menu

