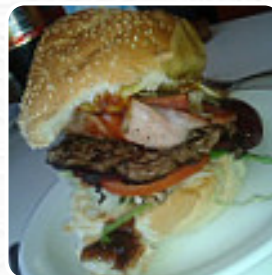




## ***Crossword Cafe Menu***

<https://menulist.menu>

226 Rusden St, Armidale, New South Wales 2350, Australia  
(+61)267721685



On this webpage, you can find the complete menu of Crossword Cafe from [Armidale](#). Currently, there are 11 dishes and drinks up for grabs. For **seasonal or weekly deals**, please contact the restaurant owner directly. You can also contact them through their website. What [User](#) likes about Crossword Cafe:

Sat down here for lunch at this visit. Previously had only purchased takeaways. I had the most amazing hamburger so delicious, best I've had in years. Daughter had a pie which she really enjoyed. Staff very friendly, pleasant place to sit and eat, very handy to the hospital. What [User](#) doesn't like about Crossword Cafe: this type of cultural appropriation is not in order! Sexual representations of Indians are harmful to the real world communities they allegedly represent. Dreamcatchers and headdresses are not their culture to peddle. please do not support this waste industry by selling this article. Support...local artists who instead create original content. the food and service here is excellent. sure there are many customers thro... [read more](#). The restaurant also offers the possibility to sit outside and eat and drink in nice weather. The Crossword Cafe from Armidale presents different delicious French courses, and you may look forward to the tasty classic [seafood](#) cuisine. In addition to simple snacks, sweet pieces and cakes, we also serve **cold and hot drinks**, Furthermore, the visitors of the establishment enjoy the comprehensive selection of the various coffee and tea specialities that the restaurant has available.

# ***Crossword Cafe Menu***



## ***Non alcoholic drinks***

LEMON

## ***Burgers***

HAMBURGER

## ***Hot drink***

HOT CHOCOLATE

## ***Starter salads***

WEDGE

## ***Coffee***

COFFEE

## ***sauces***

SAUCE

***These types of dishes are  
being served***

SALAD

BURGER

***Dishes are also prepared with  
these ingredients***

MILK

CHOCOLATE

SEAFOOD

# ***Crossword Cafe Menu***



## ***Crossword Cafe***

226 Rusden St, Armidale, New  
South Wales 2350, Australia

### **Opening Hours:**

Monday 07:00 - 20:00  
Tuesday 07:00 - 20:00  
Wednesday 07:00 - 20:00  
Thursday 07:00 - 20:00  
Friday 07:00 - 20:00  
Saturday 11:00 - 16:00  
Sunday 11:00 - 16:00

Made with [menulist.menu](https://menulist.menu)

