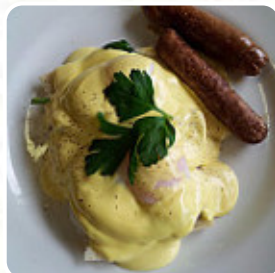




Charlie's On East Menu

<https://menulist.menu>

4 Hughes Ave, Port Fairy, Victoria 3284, Australia, PORT FAIRY
(+61)355682885,(+61)427723378 - <http://www.charliesoneast.com.au>



A complete [menu](#) of Charlie's On East from [PORT FAIRY](#) covering all 36 menus and drinks can be found here on the menu. For **changing offers**, please get in touch via phone or use the contact details provided on the website. What [User](#) likes about Charlie's On East:

My wife and I went to this restaurant for lunch recently. There were quite a few other people enjoying the views and their food. The menu was restricted to about 10 choices. There is also a good selection of wines to be tried. The view was very good and although it was cold and windy outside we were comfortably warm. From our table the view was very good but there were other diners occupying tables with superior views.... [read more](#).

What [User](#) doesn't like about Charlie's On East:

hmmm ... this restaurant offers great views to enjoy a long relaxing afternoon so we were really hoping for a good meal and a couple of glasses of wine to relax, but sadly it stopped at the views. Yes, they were quite busy so we were more than happy to wait for our table to be cleaned but that did take quite a while. Once we decided what we wanted to order, off to the counter to order to be let down that BOTH of our se... [read more](#). The place also offers the possibility to sit outside and be served in nice weather, and there is no-charge WLAN. The rooms on site are accessible, and therefore no problem for customers with wheelchairs or physical disabilities. The comprehensive selection of *coffee and tea specialties* greatly enhances the value of a visit to Charlie's On East, For a snack in between, the delicious sandwiches, small salads, and other snacks are suitable. You have the option to, after the meal (or during it), still relax at the bar with an alcoholic or non-alcoholic drink, and you can look forward to the delicious classic [seafood](#) cuisine.

Charlie's On East Menu



Non alcoholic drinks

WATER

Burgers

HAMBURGER

Snacks

CHIPS

Fish dishes

FISH AND CHIPS

Seafood

SQUID

Breakfast

HASH BROWN

Fish

SMOKED SALMON

Pizza klein - ø 22cm

HOLLANDAISE

Starters

SEAFOOD PLATTER

Sauces

MUSHROOMS

Build your own

BOWL

Extra soßen

CHUTNEY

Omelette

OMELETTE

American food

EGGS BENEDICT

Vegetables

LETTUCE

Coffee

COFFEE

Breakfast on the side

TOMATOES

sauces

SAUCE

Soft drinks

WATER

ORANGE JUICE

JUICE

These types of dishes are being served

STEAK

PASTA

FISH

BURGER

Charlie's On East Menu



Dishes are also prepared with these ingredients



CHOCOLATE

BEEF

TOMATE

ONION

EGG

CHEESE

AVOCADO

BACON

EGGS

SEAFOOD

CHAMPIGNONS

Charlie's On East Menu



Charlie's On East

4 Hughes Ave, Port Fairy, Victoria
3284, Australia, PORT FAIRY

Opening Hours:
Sunday 8:30-16:00
Monday 8:30-16:00
Tuesday 8:30-16:00
Wednesday 8:30-16:00
Thursday 8:30-16:00
Friday 8:30-16:00
Saturday 8:30-16:00

Made with menulist.menu

