

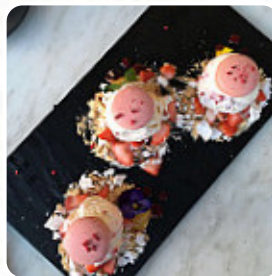


## ***St. Louis House of Fine Ice Cream & Dessert Menu***

<https://menulist.menu>

Shop R1A, Westfield Tea Tree Plaza, 976 North East Road, Modbury, SA, MODBURY, Australia

**(+61)433329303**



Here you can find the **menu of St. Louis House of Fine Ice Cream & Dessert**, located in MODBURY. Currently, there are 14 food and drinks on the menu. You can inquire about **changing offers** by phone. Looking for some **sweets**? Look no further than St. Louis House of Fine Ice Cream & Dessert, which offers **delectable desserts** that will certainly quench your cravings, Likewise, the customers of the gastronomies prefer the large choice of various **coffee and tea specialties** that the Tavern provides. Start your day on the right foot with a **delicious breakfast** served at dawn, with a full stomach. Reservations can be made at this place by phone by calling, phone: [\(+61\)433329303](tel:+61433329303). [Simply order your food](#), and the restaurant will deliver it to your doorstep in MODBURY.

# *St. Louis House of Fine Ice Cream & Dessert*



## *Desserts*

STRAWBERRY ICE CREAM

## *Non alcoholic drinks*

LEMON

## *10 most popular*

SHAKE

## *Dessert*

CREPES

## *Häagen dazs*

SALTED CARAMEL

## *Pop tarts*

BLUEBERRY

## *Eiskugeln*

CARAMEL

## *Beverages*

POP

## *Individual items*

BISCUIT

## *Coffee*

COFFEE

## *Breakfast - shmeear flavors*

REGULAR

## *Restaurant category*

DESSERT

## *These types of dishes are being served*

DESSERTS

ICE CREAM

# *St. Louis House of Fine Ice Cream & Dessert*



## *St. Louis House of Fine Ice Cream & Dessert*

Shop R1A, Westfield Tea Tree  
Plaza, 976 North East Road,  
Modbury, SA, MODBURY,  
Australia

**Opening Hours:**  
Monday 8-22:00  
Tuesday 8-22:00  
Thursday 8-23:00  
Friday 8-23:00

Made with [menulist.menu](https://menulist.menu)

